



Purbeck Community Rail Partnership Annual Review July 2025



Photo by ANDREW P.M. WRIGHT



Who We Are

Community rail is a unique and growing grassroots movement made up of 75 community rail partnerships (locally based community organisations), 1,300 station volunteer groups, and other community-led initiatives across Britain, engaging and empowering communities, and helping them get the most from their railways. The Purbeck Community Rail Partnership covers the rail services between Holton Heath and Dorchester South, and the Swanage Heritage Railway. The communities of Wareham; Wool, Dorchester and Swanage form the core area.

What We Do

The Purbeck Community Rail Partnership (PCRP) brings together representatives of local authorities; train operating companies; infrastructure providers; local businesses; and community groups to improve rail use within Southern Dorset through community involvement; attractive station facilities; and good integration with other forms of transport so that those rail services meet the needs of local people, businesses and visitors to our region. We also promote active travel, social inclusion and health and well-being.

From the Chair



The past year has been subject to many challenges with both funding applications, limited resources and uncertainty regarding the future of CRPs. We are having to demonstrate social value in all the work that we undertake. Notwithstanding that we could always do more and do things better, we are proud of what we are achieving as a small independent CRP with the resources we have available.

On a national level, a report published during September 2024 by Community Rail Network (CRN) assessing the social value of Community Rail, demonstrates a major return on investment of £17.89 for every £1 spent, through the work of 75 community rail partnerships and nearly 1,300 station groups, with 100-plus officers and 8,250 volunteers. We are proud to be part of that impressive output.

The key driver is promoting sustainable joined-up transport to and from our stations ensuring people can get to and from railway stations using buses, cycling, walking, and participating in active travel. Community engagement and shared mobility is key to opening up rail to more people for longer and more regular based journeys. There is a need for the rail sector to work with other operators and local communities on 'first and last mile' connections, in line with the sustainable transport policy, with private car parking given less priority. This is our priority.

We would like to thank all those who have supported the Partnership thus far and look forward to their continuing support as we move forward. There are of course some challenges, however we have been proactive with more community and stakeholder engagement activities to develop positive partnerships to achieve the improvements we would all like to see on our railway.

Beryl Ezzard (Chair PCRP)

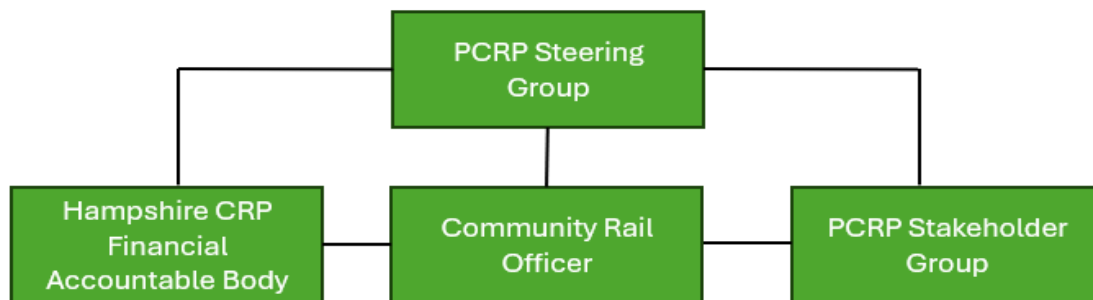
Working Together

We have been reaching out to new stakeholders to work together where we have common aims, relevant skills and the desire to move things forward. We realise the potential of working together to make an impact for shared goals and mutual benefit. We see this as key for the long term and the partnership recognises this, thus the drive on networking and partnership working. We are building our stakeholder group to be more diverse and representative of the region. This will build

trust and recognition by bringing people together to utilise limited resources to achieve objectives. This also creates a sense of local ownership and responsibility where your contribution matters.

Organisational Structure

The partnership is governed by the Constitution, Business and Activity plan as working documents agreed and updated on a regular basis by the Steering Group. The PCRP is an unincorporated non-legal entity. The accountable body and employer function has been with Hampshire CRP CIC since October 2022. Consideration is to be given to future structure of PCRP, including whether to join forces with other local CRP(s) or to become Incorporated in its own right. Currently the PCRP has one part-time employee performing the function of Community Rail Officer accountable to the Steering Group.



Steering Group

The Steering Group is responsible for providing the strategic direction of the Purbeck Community Rail Partnership and for the preparation and monitoring of an annual community rail development plan aimed at achieving the Partnership's aims and objectives

The Purbeck Community Rail Partnership Steering Group is comprised of: Community Rail Network, Dorset Council, Network Rail, Perenco UK, South Western Railway, Swanage Railway, Swanage Town Council and the National Trust meeting on a quarterly basis.

Stakeholder Group

The Stakeholder Group represented by organisations from the wider community is responsible for approval of the annual community rail development plan and for monitoring its implementation and evaluation. It shall also provide a forum through which members can raise issues relating to the aims and objectives of the Partnership and make proposals for the further development of the railway lines of Southern Dorset. They meet twice per annum.

Funding

There has been much uncertainty regarding the future funding for Community Rail as the DfT look to make savings. As a result, core funding for CRP's is at risk and we have been looking to diversify with alternative sources where possible and will continue to work with our partners to do so. We are open to attracting private sector funding where appropriate and engaging with corporate partners and we are looking forward to engaging with more local stakeholders.

Financial Summary

The current balance as from the end of June 2025 was £63,025.34 bringing forward £34,921.05 from the previous financial year. Our annual budget calculator predicts and estimated balance at the end of the current financial year to March 2026 of £35,608.60 which is in line with previous surpluses at the year end. This takes into consideration all estimated known expenditure but not all grant funding we may acquire during the year. We also operate a reserve policy of £25,000 for unforeseen circumstances and risk management.

South Western Railway (SWR) continues to be the main core funder to which we are grateful and wish to thank them for their continued support both financial and advisory. We also appreciate the project funding support given over the period. We wish to thank the Community Rail Network (CRN) for their support with funding applications, advice, and training.

Swanage Railway continues to support with core funding and ITC provision. Core funding also comes from Dorset Council towards projects who are active partners and have a place on the steering group. We extend our thanks to these organisations and look forward to their continued support.

Line Guides

The Isle of Purbeck is a peninsula located in South Dorset. It is renowned for its unspoilt beaches, incredible scenery and probably best known for its Jurassic Coast. There are so many beautiful places to explore and enjoy, either at the coast or inland you can visit Forests and Heathlands, all having their own unique wildlife and habitats. The line guides distributed throughout Dorset act as information leaflet for people using the railway and integrated transport to visit places of interest. They promote health and well-being though active travel to explore our unique landscape.

Purbeck Community Rail Partnership

Swanage Railway
Harman's Cross
Herston Halt
Swanage

Dorchester

- 1 Dorset Museum: High West Street, Dorsetmuseum.org, 01205 261 736. A 10 minute walk from Dorchester South Station.
- 2 Titankhams Exhibition: 45 High West Street, titankhams.com, 01205 261 171. An 11 minute walk from Dorchester South Station.
- 3 Dorset Museum: Ken Way, titankhams.com, 01205 261 880. An 11 minute walk from Dorchester South Station.
- 4 The Keep Military Museum: 25 Bickford Road, keepmilitarymuseum.org, 01205 264 069. An 11 minute walk from Dorchester South Station.
- 5 Terracotta Warriors Museum: 30 Salisbury Street, terracottawarriors.co.uk, 01205 264 040. A 13 minute walk from Dorchester South Station.
- 6 Max Gate: Alington Avenue, nationaltrust.org.uk/max-gate, 01424 246 1895. Take Sun pre-booked guided tours only. Approx. 65 minute walk from Dorchester South Station.
- 7 Maiden Castle: Maiden Castle Road, english-heritage.org.uk. A 30 minute walk from Dorchester South Station.

Moreton

- 8 The Walled Garden and Inverole Cafe: wallsgardenmoreton.co.uk, 01202 465 22 43. A 30 minute walk from Moreton Station.
- 9 St Nicholas Church: Moreton, winthorntonmoreton.org.uk, 01424 886 8668. A 25 minute walk from Moreton Station.
- 10 Mill House Old Mill Museum: The Mill House, 23 Moreton Road, Overmoigne, millhouseold.com, 01305 85 22 20. A 30 minute walk from Moreton Station.
- 11 Sculpture by the Lakes: Pallington Lakes, sculpturebythelakes.co.uk. A 30 minute walk from Moreton Station. Sailed by Simon Gulligan.
- 12 Appenzel: 20 minute walk from Wool Station.

Wool

- 13 Monkey World - Ape Rescue Centre: Toul Hill, Longhampton, Woolton, monkeyworld.org, 01424 46 33 37. A 16 min. walk from Wool Stn or a short bus ride on X32.
- 14 Bovington Tank Museum: Linnis Road, Bovington, Bournemouth, tankmuseum.org, 01202 465 22 20. A 40 min. walk from Wool Stn or a short bus ride on X32.
- 15 Jurassic Coast: jurassiccoast.org and visit-dorset.com.
- 16 Lushworth Cove: A 1hr 45 min walk from Wool Station or an 11 min bus ride on route X32 (Mon-Fri only) then a 6 min walk or 18 min bus ride on Purbeck Breezer Route 20, or 18 mins on Purbeck Breezer 20 (summer only) or an 18 min bus ride on route X32 (Mon-Fri only) then a 20 min walk, or 22 min bus ride on Purbeck Breezer Route 20, or 12 min on Purbeck Breezer 20 (summer only).

Wareham

- 17 Wareham Town Museum: Town Hall, East Street, warehamtownmuseum.co.uk, wareham-town-museum, 01929 55 34 49. A 13 minute walk from Wareham Station.
- 18 Max Cinema: 14 West Street, Wareham, maxcinema.com, 01929 55 34 49. A 13 minute walk from Wareham Station.
- 19 River Frome Boat Trips: The Quay, Wareham, riverfromeboattrips.co.uk, 01929 55 06 88 or warehamquayrivertrips.co.uk, 01929 55 27 802. A 10 minute walk from Wareham Station.
- 20 Hobbes for Gardens: West Holme, Wareham, hobbessforgardens.co.uk, 01929 55 47 80. A 10 min walk from Wareham Station, or 4 minute bus ride from Wareham on X32 Jurassic Coast, or 40 minute walk from Swanstray Bus Stop.
- 21 Hersey England: herseyengland.com.
- 22 Wareham Forest: Colcolour, Wareham, forest.org.uk, wareham-forest, purbeck-trail, wareham-forest. A 1hr 20 minute walk from the station.
- 23 North Acres: Arne Road, Wareham, northacres.co.uk, 01929 55 20 20. A 30 min walk or 10 min bus ride from Wareham Stn on Purbeck Breezer 40. Alight at Stoborough Green for a 10 min walk along New Road from Arne Road.

Holton Heath

- 24 Sandford Heath National Nature Reserve: Sandford Heath, Wareham, nature.org.uk, 01929 55 20 20. A 10 minute walk from Holton Heath Station.
- 25 Royal Navy cordite factory: midcook. Some of the remains of the factory and its defences are situated within Sandford Heath Nature Reserve. A 10 minute walk from Holton Heath Station.
- 26 Farmer Palmer's Farm Park: Wareham Road, Organford, farmerpalmer.co.uk. A 20 minute walk along Station Road and then Wareham Road.
- 27 A 10 minute bus ride from Wareham Station on Purbeck Breezer Route 40 then a 3 minute walk from the bus stop.

Legend:

- Swanage Railway
- Harman's Cross
- Herston Halt
- Swanage
- Railway lines covered by Purbeck Community Rail Partnership
- Connecting railway lines
- Waterways
- Lawrence of Arabia Walking Trail: See visit-dorset.com
- Erlet Blyton Trail: See visit-dorset.com/erletblyton
- Hardy Way: See ledw.org.uk

Get there by train

This map is not to scale. Walking times given are approximate.

Purbeck Shuttle 200 - May to September 2025: The Story So Far

During 2022 a trial shuttle bus service set up by the RSPB to connect Wareham train station and RSPB Arne Nature Reserve which ran for two years. The PCRP played a key role during 2023 and extended the service to include additional runs between RSPB Arne and Purbeck Park (Norden Park and Ride) and Norden Farm Campsite. There were four return journeys daily from Wareham Station, and two return journeys from Purbeck Park. The little green bus has improved access to the nature reserve. It has also reduced the number of cars used to get to the reserve at a peak time of the year.



The service 2RN (to Arne) shuttle bus was supported by funding from The National Lottery Heritage Fund acquired by the RSPB and PCRP and is operated by Dorset Community Transport. A subsequent limited winter service ran from October 2023 to Easter 2024. This helped the continuity and raised awareness.

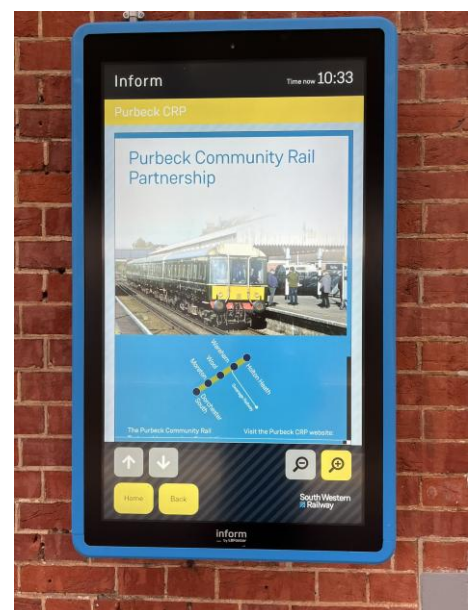
We funded this project to run again with the support of our partners from May to September 2024. We have been busy establishing more partners and financial support to run a service from May to September 2025 with a new destination the Blue Pool Nature Reserve.

A new name Purbeck Shuttle 200 was chosen to mark the special anniversary of the modern railway to which it links and the more destinations it now serves. We hope will establish a regular service and viable operation moving forward as continuity builds and its contribution to rural mobility and social inclusion becomes more established.



Totem Information Board Additions April 2025

We have funded and supported the installation of three totems at Wareham, Wool and Dorchester South Stations. During April Totems were added at Dorchester and Wool. They bring a whole new level of access to real time information. One of the main advantages of totems over printed matter is that the screens are interactive, and the text size can be varied to meet the individual's needs. It is also far easier to ensure that the information is kept up to date and it is relatively simple to link through to other live sources of information. Passengers will be able to make informed decisions so their journey experiences will be improved saving time and inconvenience during busy times and when unexpected disruption happens. Onward travel information to local tourism attractions, bus times, cycle / walking routes bus timetables and maps can be uploaded. This information and any subsequent updates can all be drawn from individual websites. The output is real time customer information for the travelling public.



Events

Station in Bloom Awards October 2024

Blackmore Vale Community Rail Partnership in collaboration with South Western Railway hosted the 'Stations In Bloom' awards at Castle Gardens in Sherborne during October 2024, kindly sponsored by The Gardens Group.

Stations in Bloom (SIB) is an inter-station celebration of volunteering across the SWR & GWR networks in South West and Southern England. Stations in bloom's underlying green credentials embrace a non-competitive and non-captious ethos ensuring its nature is collaborative, celebratory and fun. Engaging with local communities, station volunteers and railway staff to bring wider recognition



to the hard work invested into making stations welcoming environments for rail-users and visitors. The awards, based on the competition run by the Royal Horticultural Society, recognise staff and volunteers for their work nurturing stations across the network into neighbourhood hubs.



railway

They also celebrated all the good that a train station does to add value to local communities and environments. In the Purbeck area the Friends of Wareham Station won a prestigious Gold Award for planting and maintaining a large number of floral displays. Wool also received a Gold Award for distinctive floral containers, and a superb marriage with local bus operators, a well looked after travel hub. Regionally recognised as a positive, friendly, inter-station celebration of volunteering, its creative, fun and innovative. Augmented by an engaging ethos widely embraced by all. Spreading wider recognition of volunteer dedication and commitment across the rail networks, region and beyond. Strengthening the sense of belonging to the community rail family and generating masses of goodwill across the railways.

SWR Community Railway Conference October 2024

SWR hosted their first awards ceremony as part of their annual community rail conference on the 10th October 2024 at Woking. CRP's were invited to submit projects which match their criteria in selected categories. Purbeck entered the Visit Dorchester Video (visit our YouTube channel) in partnership with South Wessex CRP which was voted the winner for best communication and education award 2024. This was all about sustainable integrated transport by engaging with potential new users to visit the town by rail accessing travel information, onward journeys and other general information about the destination including tourist information.



Community Rail Week May 2025



Community Rail Week runs every May on an annual basis and sponsored by Rail Delivery Group, used the theme Railway 200. As part of community rail week, Purbeck CRP and South Wessex CRP, working in collaboration, attended a public engagement and volunteer recruitment event at Dorset County Museum. The purpose was to promote Community Rail to the public and explain the work that we undertake. This was also an good opportunity to talk about volunteering opportunities and the work of local station adoption groups

Railway 200 Year



This celebration of 200 years since the opening of the Stockton & Darlington Railway, is a national one and is currently being led by the Great British Railways Transition Team. The Partnership is planning to take part and is engaged with the organiser, CRN. We will work with SWR and SR on active participation working on the themes of heritage railways, culture and tourism, museum publicity, celebrating rail people, activities and events, and the possibility of hosting the exhibition train in our region. We also

took the opportunity to mark the 140th anniversary of the opening of the Swanage branch and combining this celebration with Rail 200.

Railway 200 is inviting the rail industry, its partners and custodians of railway heritage, art and artefacts to consider how they can play their part. Community rail is ideally placed to get involved and promote local messages by springboarding off the national celebrations. This is a once-in-a-generation celebration that provides community rail an opportunity to be part of the national Railway 200 story and benefit from its legacy. We have events and projects throughout the year at our stations celebrating this milestone.

Around our Stations:

Dorchester South

Mid-Tier Scheme

South Western Railway invited a number of local VIPs as it unveiled a number of improvements launched during April 2025 to enhance the gateway to Dorset's County town and the wider Jurassic Coast region.



A number of improvements have been delivered as part of the Access for All Mid-Tier programme which includes an enlarged booking hall with improved waiting area, more seating and quieter flooring, new automatic doors to and from the booking hall, two new waiting shelters on Platforms 1 and 2, an improved existing waiting shelter on platform 2, a new interactive information 'totem'.

Additionally, new murals of Dorchester have been unveiled on the station frontage and a Beryl e-bike bay has been installed in front of the station. These improvements build on previous changes such as the station repaint, toilet refurbishment, and new customer information screens.



The Purbeck Community Rail Partnership have played a key role in funding some of these improvements with many more to come. Now the station needs more volunteers to join the existing Friends of Dorchester South to maintain and look after newly installed planting and landscaping.



Railway 200 Celebration of the 178th Anniversary of Dorchester South Station

Staff at Dorchester South Railway Station have been busy putting together an exhibition to celebrate the 178th Anniversary of the station from June 1st as part of this Railway Centenary year. This includes railway memorabilia, photographs, old maps, stories and information on the history of this iconic station situated in the heart of Dorchester. The Friends of Dorchester South also have information on activities undertaken and appeal for new volunteers. Customers and visitors to the station could see this during the whole month of June 2025 located in the newly refurbished waiting room on platform one.



Murals Designs Installed on the Station Building

The Purbeck CRP have produced three murals consisting of aluminium composite sign panels, with full colour anti-graffiti laminated vinyl graphic. The aim was to create visual and colourful enhancements at the main entrance to the station for all users to see making the station more welcoming and attractive inspiring local interest through community input and public art. The project was funded by SWR community rail project funding and we appreciate their support during the process.

This was a locally initiated partnership involving the Friends of the station, Arts Society for Dorset County, Dorchester Town Council, Dorchester Transport Action Group and the PCRCP stakeholders. The local community can take pride in the outcome of these professional designed murals of iconic landmarks relating to Dorchester.



They were installed in January 2025 over three archways on the existing station building. We asked local artists to produce designs based on the history, heritage and prominent landmarks within the town to represent the station and surrounding area as it has evolved over the years. There are two existing ones created and commissioned by a prominent local brewery back in the 1980s who owned the land adjacent to the station. We are building on this with a story which is relevant to the local community. This also fits in with planned station developments including the SWR Mid-tier Scheme involving the improvement of station building, additional waiting areas and the landscaping at the front of the station where these murals are in situ. The locations are in the brick arches on the existing station building adjacent to the main entrance.

Wool

Wool Information Board



The Purbeck Community Partnership (PCRP) in collaboration with the Friends of Wool Station have produced an information board at the front of the station. The idea was to promote onward and active travel in the surrounding area and signpost places of interest. There was also a focus on the village of Wool itself often transited by the many visitors going on to other

locations. Wool has many local attractions and rich heritage, and we are aiming to highlight these and generate spending in the local economy. As well as these historic attractions the board highlights many walking routes and wildlife in the vicinity. Local shops and hospitality venues also feature. Therefore, spending time in Wool could be informative, inspiring and rewarding.



We were pleased to employ local Purbeck artist and graphic designer Maria Burns to produce and design this attractive information board in accordance with the requirements. A local Dorset company was responsible for the manufacture and installation. The board was funded by South Western Railway's Social Development Fund with match funding from the PCRFP.

Wool Station is the gateway to several key man-made and natural attractions including Durdle Door, Lulworth Cove (internationally renowned) Bovington Tank Museum and Monkey World. It is also close to the Dorset Innovation Park (DIP) which receives business visitors all year round, many coming by train. Wool also receives all-year-round international visitors heading for the Jurassic coast and the attractions listed below. Wool is a starting off point for the Lawrence of Arabia trail. The station forecourt lies on National Cycle path NCN2, and several walking and cycling paths radiate from the station.



Partnership with Bovington Tank Museum

As part of the Railway 200 celebrations, we will be working with Bovington Tank Museum to highlight the historical links between Wool Station and the nearby Bovington Army Base. The base is home to the Royal Armour Corps and is famous as the birthplace of the Tank in World War One. In the inter-war period, there was a military branch line between the station and army base.

Heritage Poster Boards

As part of this Centenary year many celebrations are taking place throughout the UK involving railway heritage. The Purbeck Community Rail Partnership and the Friends of Wool Station wish to commemorate the previous rail links between Wool Station and Bovington Army Camp. Visitors can still see the tank loader behind this platform used to load armoured vehicles onto flat wagons and the mainline railway from the first world war up to the 1990s. To tell this story we have partnered with the Bovington Tank Museum Archives team to design and produce these posters to which we are truly grateful. We hope to install these this summer.

During the First World War the transportation of German prisoners to POW camps enabled the construction in 1918 of a branch line from Wool to Bovington Camp which was developing as a tank training centre at that time. The single-track branch line over two miles in length was constructed by the Military Works Company of the Royal Engineers consisting of around 100 men assisted by German prisoners. The line lasted just 10 years and was torn up in 1936. This story is largely forgotten, and we would like to bring this alive and make local people and visitors aware of these historic rail links with Wool Station and Bovington Army Camp.

Blue Plaque

The artefact of historic importance at Wool Station is the tank loading ramp, sited in the up sidings behind platform one, where armoured vehicles were loaded on to “rectank” flat wagons. To highlight this piece of railway heritage, we propose installing a replica blue plaque on the platform fence so passengers can understand and appreciate the significance and role this played during the Great War and beyond.



Wareham

Railway 200 Celebration of the 178th Anniversary of Wareham Station Saturday 14th June 2025

As part of Railway 200 celebrations, the Friends of Wareham Station hosted a community event to highlight the history and contribution the station has made over the years and will continue to make to the local community and visitors to the region.



This was a celebratory event during this special Railway 200 Bicentenary year aimed at the local community to showcase this historic station by raising the profile and benefit of using integrated transport. The contribution the station and railway have made since its existence from 1847 as well as the aspirations for the continued development of Wareham Station as a rural hub and gateway to the Isle of Purbeck.



Activities involved, special floral display of "200 years", station history briefing by Ben Buxton, original station Goods Shed tours, tombola/raffle of Railway Memorabilia, A big thank you to the Quangle Wangle Choir from Weymouth who sang railway songs and the impressive replica of Stephenson's Rocket made by the local Men's Shed. The event was opened by Deputy Town Mayor Keith Critchley and special guests include Vikki Slade MP for Mid Dorset and North Poole who cut the special celebratory Railway 200 cake.

Wareham Landscape Proposal

The PCRCP would like to improve the land on the approaches to the station adjacent to the level crossing. As a first phase we installed six Corten Steel Planters often seen in public realm locations on both sides of the railway. This was funded by Community Rail Network via their Community Rail Development Fund . This is to improve the aesthetics and make these areas more welcoming and attractive for the benefit of all users of the station area. This is particularly important with the extra services using the station at peak times and future planning relating to the Wareham Station Strategic Plan. The concept is to make Wareham Station a community hub, which would support additional bus services like the Purbeck Shuttle 200 and future Swanage Railway services to Wareham.



Swanage Railway

Visit to Wareham Station and the Swanage Railway by SWR and the PCRCP

On Thursday 20th February, the Railway hosted representatives from South Western Railway senior management team and Purbeck Community Rail Partnership members. The group met for a briefing on the current progress of the Swanage Railway and mutual developments before a trip up the line to Stoborough to view the new carriage shed and other works.



This trip was initiated by the Purbeck Community Rail Partnership to inform SWR about the ambitions of the Swanage Railway. This was also seen as an opportunity to build relationships with stakeholders and work together to increase the profile of the heritage branch line and become more aware of the plans and opportunities to develop these links.

Swanage Railway Sygnets Visit February 2025

Back in February this year the Swanage Railway Sygnets enjoyed a fascinating visit to South Western Railway's Bournemouth maintenance depot, gaining an invaluable insight into modern railway operations. Seeing first-hand how today's trains are maintained gave their young volunteers a deeper appreciation of the industry's skills, technology, and challenges.



We are keen to highlight careers, opportunities and Routes into Rail in the Industry especially as part of this celebratory Railway 200 year. The group were guided round the depot by two full-time maintenance engineers at Bournemouth Depot who both started as young heritage railway volunteers whilst building careers in the modern rail industry.



Since 1997, the Swanage Railway Sygnets youth group programme has given 13-18-year-olds the opportunity to learn, volunteer, and develop skills in railway operations. Visits like this not only deepen their knowledge but also highlight how heritage railways can lead to careers in the wider industry.

Photos courtesy of Sam Smith and Dan Bennett

Photos by ANDREW P.M. WRIGHT

Invitations were made to selected personnel from the rail industry to raise the profile of this service with the intention of creating awareness, gathering support, highlighting issues, and showcasing our region by rail and connecting services. Visitors included Andrew Haines CEO Network Rail, Claire Mann MD SWR, Jools Townsend CEO CRN, Anthony Smith Travel Focus and James Abbott Consultant Editor for Modern Railways where we benefited from a sizable contribution in their August 2023 Edition.

Swanage Railway Community Engagement Weekend February 2025

The PCRП had a presence at the Community Engagement Event scheduled for the weekend of February school half term. This was a good opportunity to work with SR and engage with volunteers and potential new volunteers and the work that we do with opportunities to get involved and support community rail.



Harman's Cross Station

The Partnership was please to support the enthusiastic volunteers at Harman's Cross Station on the Swanage Railway in their efforts to fly the flag for Railway 200 events. This station is well worth a visit for anyone unfamiliar.



Volunteering

Although we now have station adoption groups on three out of five of our SWR mainline stations, we still lack resources to recruit more at this time. However, plans are underway to address this, and we look forward to working in close partnership with the Swanage Railway Volunteer Recruitment and Retention Officer to recruit new volunteers. We understand the value of volunteers and the knowledge, skills and experience they bring to our local stations.

We would like to thank all the Friends Groups who undertake many hours of volunteering looking after their respective stations with hard work and dedication. We will endeavour to support them with ongoing projects, funding applications and ideas for improvement as we move forward together. We are always on the lookout for new volunteers and ask anyone interested to get in touch.

Marketing

The PCRCP promotes tourism to the region in the form of line guides, promotional videos, posters, flyers, our website, social media and through all our partners. There is scope to work more with the local Destination Management Organisation (DMO) and local tourism officers to maximise impact as well as attend public events to showcase Community Rail and explain all that we do to the wider community.

Aspirations for the Future

To promote sustainable transport usage across the region, reaching out to all the community to get their input to help shape what we do. To develop our stakeholder and community engagement techniques to encourage grass roots involvement in projects we undertake with a view to establishing responsibility and local ownership. The aim is to build firm foundations working through our partnerships by creating awareness, utilising resources and maximising our collaboration opportunities to achieve shared aims and desired outputs. Our aim is to be an inclusive and proactive partnership.

Steven Booth Purbeck Community Rail Officer

Email steve.booth@purbeckcrp.org.uk Tel 07485 372137 <https://purbeckcrp.org.uk>

